



October 12th to 16th, 2022
 Foz do Iguacu, Paraná – Brazil
 East City, Alto Paraná - Paraguay

Bulletin No. 3

SAJOC
 South American Junior
 Orienteering Championships
 Classes M/W 20E

SAYOC
 South American Youth Orienteering
 Championships
 Classes M/W 16E and 18E





INDEX

<i>Description</i>	<i>Page</i>
<i>Invitation.....</i>	<i>3</i>
<i>Authorities Messages.....</i>	<i>3</i>
<i>Organization.....</i>	<i>5</i>
<i>IOF EA and Jury Members.....</i>	<i>5</i>
<i>Programme.....</i>	<i>6</i>
<i>Classes.....</i>	<i>7</i>
<i>General Map.....</i>	<i>7</i>
<i>Embargoed Areas.....</i>	<i>7</i>
<i>Terrain.....</i>	<i>8</i>
<i>Maps.....</i>	<i>10</i>
<i>Sketches and Old Maps.....</i>	<i>10</i>
<i>Punching and Timing.....</i>	<i>11</i>
<i>Rules.....</i>	<i>11</i>
<i>Awards.....</i>	<i>12</i>
<i>Antidoping.....</i>	<i>12</i>
<i>Courses Data & Other Information.....</i>	<i>12</i>
<i>Authorizations and Insurance.....</i>	<i>13</i>
<i>Deadlines and Costs.....</i>	<i>13</i>
<i>Quarantine.....</i>	<i>13</i>
<i>Elite Classes Start Time.....</i>	<i>14</i>
<i>Cantonment.....</i>	<i>14</i>
<i>Food and Banquet.....</i>	<i>15</i>
<i>Event centre.....</i>	<i>15</i>
<i>Accommodation and Transport.....</i>	<i>16</i>
<i>Event T-shirt.....</i>	<i>17</i>
<i>Weather.....</i>	<i>17</i>
<i>Covid-19 – Rules to Enter Brazil.....</i>	<i>18</i>
<i>Access to Host Countries.....</i>	<i>18</i>
<i>Event Supporters.....</i>	<i>21</i>





INVITATION

The International Orienteering Federation (IOF), the Brazilian Orienteering Confederation (CBO), the Paraná Orienteering Federation (FPO), the Cobra Orienteering Club and the GRESFI Orienteering Department / Iguazu Falls Orienteering Club are pleased to invite you to participate in the South American Orienteering Championship 2020/2022, which will be held on the triple border - Brazil, Paraguay and Argentina, from October 13th to 16th, 2022.

Six international events will be held together: the South American Orienteering Championships, the South American Junior Orienteering Championships, the South American Youth Orienteering Championships, and the Latin Cup. Orienteers may also enjoy two open events: the South American Master Orienteering Championships and the South American Open Orienteering Championships.



AUTHORITIES MESSAGES

CBO COUNCIL PRESIDENT



Dear Orienteers,

On behalf of the Council and the Brazilian Orienteering Confederation (CBO), I would like to welcome you all to the 3rd South American Orienteering Championship (SAOC), 2020/2022 edition, to be held in Foz do Iguacu – Paraná – Brazil, from October 13th to 16th, 2022.

It is the first time that this competition will take place in Brazil, after being officially recognized by the International Orienteering Federation (IOF) as a Regional Event, with the first two official editions held in Chile (2016) and Uruguay (2018).

Parallel to this event, the Latin Countries Orienteering Cup will be held, with the participation of countries from the American and European continents.

With the imminent cooling off of the COVID-19 pandemic, the organization is working hard so that the SAOC 2020/2022 becomes a quality event, with unique characteristics, providing satisfaction to those who honour us with their presences.

Welcome to the “triple border” Brazil / Paraguay / Argentina!

CARLOS ALBERTO XAVIER

Chairman of the CBO Council



EVENT DIRECTOR



Dear Orienteers,

As Event Director, I have the honour to invite you to participate in the 2020/2022 South American Orienteering Championship, which will be held in the cities of Ciudad del Este-PY, Foz do Iguacu and Medianeira-BR, from October 13th to 16th, 2022.

The border region is privileged for its tourist potential that attracts visitors from all over the world and for the first time in the South America's Orienteering history we are offering orienteers the opportunity to compete in 3 countries.

Six international events will be held jointly: the South American Orienteering Championships, the South American Junior Orienteering Championships, the South American Youth Orienteering Championships, the XXVII Latin American Cup, the South American Masters Orienteering Championship and the South American Open Orienteering Championships.

Our Organizing Committee is working hard to offer a high-level event that meets the international demands of the sport.

We are looking forward to seeing you in Brazil, Argentina and Paraguay.

Valdir Tasca

Event Director

MAYOR OF MEDIANEIRA/PR



Dear orienteers,

We would like to thank you for choosing our region to host the SOUTH AMERICAN ORIENTEERING CHAMPIONSHIPS 2020/2022, and to welcome you all to our municipality, which has the characteristic of being very hospitable, in addition to having an exuberant nature and scenic landscapes worthy of a postcard.

In this scenario, one of the most challenging events in world sport will take place, with six championships being disputed in the same event, challenging the physical and emotional capacities of the participants, amid natural barriers and paths that are known to us, but that will only take the best athletes to the victory.

Welcome! Enjoy our house! Overcoming challenges is always evolving!

Antonio França Benjamin

MAYOR OF MEDIANEIRA/PR



SECRETÁRIO DE ESPORTES E LAZER DE FOZ DO IGUAÇU - BR



Dear orienteers,

As Secretary of Sports and Leisure of Foz do Iguaçu, I am pleased to invite you to participate in the South American Orienteering Championships 2020.

Our city belongs to the state of Paraná and is known worldwide for its natural beauty, especially the Iguazu Falls, one of the Seven Wonders of Nature.

It is part of an urban region with more than 700,000 inhabitants, also made up of Ciudad del Este, in Paraguay, and Puerto Iguazú, in Argentina, countries with which the municipality borders.

Our Secretariat is supporting the event organizers, who are working hard to provide you with an excellent stay at the triple border so you can enjoy the pleasure of running your sport.

We count on your presence in this event.

Antônio Aparecido Sapia
Secretary of Sport and Leisure



ORGANIZATION

ORGANIZERS

- Cobra Orienteering Club – Cascavel – Paraná – Brazil
- GRESFI/ Cataratas do Iguaçu Orienteering Club– Foz do Iguaçu – Paraná - Brazil

EVENT DIRECTOR

- **Valdir Tasca** – E-mail: valdirtasca@yahoo.com.br – Phone: +55 45 99929-1590



IOF EVENT ADVISER and JURY MEMBERS



IOF EVENT ADVISER
Plínio Costa Nascimento

MEMBERS OF THE JURY

- Ademar Roque Hippler Ruwer – Brazil
- José Angel Nieto Poblete – Spain
- Juan Bustamante – Chile
- Victor Alfonso Perlaza – Colombia (reserve)





PROGRAMME

DATE	TIME	ACTIVITY	VENUE
October 12, 2022 (Wednesday)	All day	Arrival of athletes and delegations	Dom Pedro Hotel
		Accreditation	Foz do Iguaçu - Brazil
		Model Events	
October 13, 2022 (Thursday)	15:00	Relay (elite classes only)	Parque Lineal
	15:10	Relay (others)	Ciudad del Este
	16:30	Relay award ceremony	Paraguay
	20:00	Opening ceremony	GRESFI
October 14, 2022 (Friday)	09:00	Long course 	Sun and Gold Line Medianeira - Brazil
	14:00	Awards (Elites SAOC)	
	19:00	Annual Meeting of Latin Cup Countries	Event Centre Hotel Dom Pedro- Foz do Iguaçu
	20:00	Meeting of South American Federations	Event Centre Hotel Dom Pedro- Foz do Iguaçu
October 15, 2022 (Saturday)	09:00	Middle course 	Natural Reserve – Vila A – Foz do Iguaçu - Brazil
	13:00	Award ceremony	
	20:00	Commemorative dinner (banquet)	GRESFI
October 16, 2022 (Sunday)	08:00	Sprint course 	Vila A
	10:00	Award ceremony	Foz do Iguaçu- Brazil
	11:00	Closing ceremony	

(*) The open ceremony is a close event for authorities, sponsors and representatives of the participating countries.

Due to bureaucratic problems and authorized by the IOF Event Adviser the organizing committee has decided for a new programme and Argentina will not receive any official courses of SAOC/SAJOC/SAYOC.



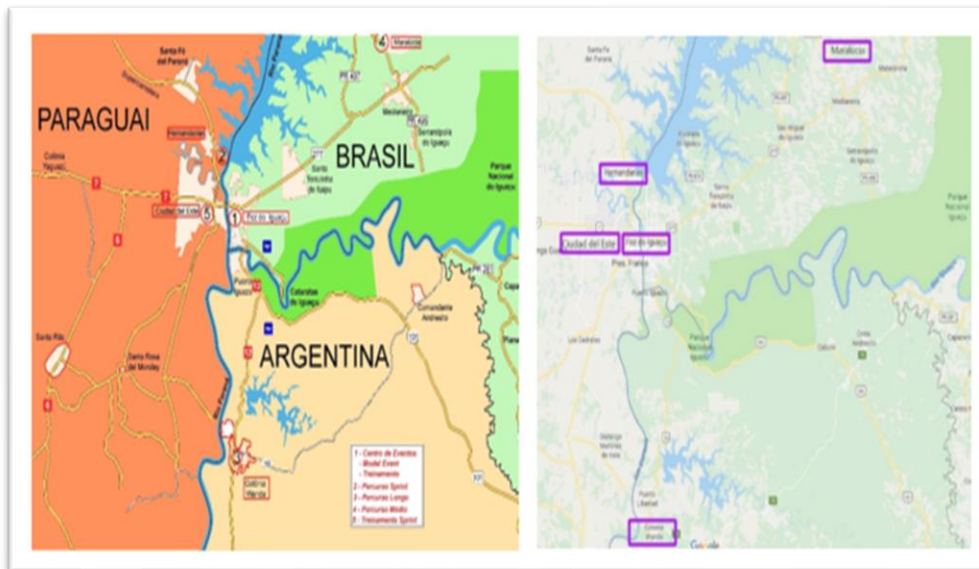


CLASSES

EVENT	CLASSES	LEVEL OF DIFFICULTY	AGE
SAJOC	M20E / W20E	E	Born in 2002 or before
SAYOC	M18E / W18E		Born in 2004 or before
	M16E / W16E		Born in 2006 or before



GENERAL MAP



EMBARGOED AREAS

The embargoed areas may not be used for training in accordance with current regulations. These are private areas with exclusive permission for the event organizers. Some of the related areas may be released prior to competition for training purposes.

The Latin Countries Cup and the South American Orienteering Championships competition areas are in a region called the triple border, Brazil-Paraguay-Argentina.





TERRAIN

1. SPRINT area – characterized by flat terrain with moderate unevenness, transversal streets, with several ends of streets that in some cases are interconnected with others by narrow passages, woods represented by the symbols 405, 401 and 403.





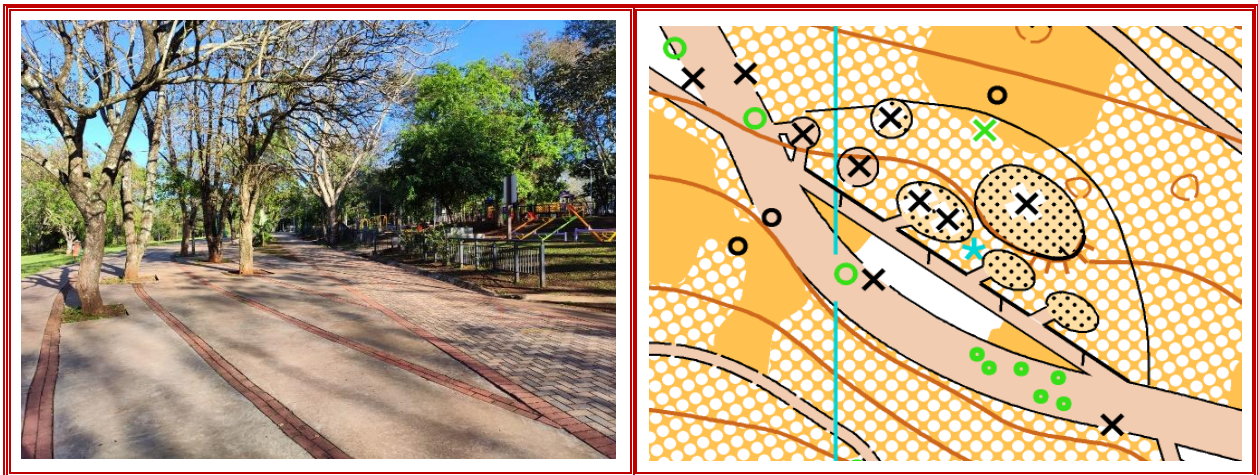
2. The long course terrain characterized by considerable unevenness and in some places stony and presenting varied vegetation represented by symbols 401, 402, 403, 405, several fences, small cultivated areas, streams that can be easily crossed.



3. The middle course terrain presents moderate unevenness, small ponds, erosion in some impassable points, a mesh of pedestrian trails, vegetation represented by symbols 406, 408 and 410 in its entirety and practically the entire mapped area it is surrounded by an impassable fence.



4. Relay area – characterized by flat terrain with moderate unevenness, transversal streets, with several ends of streets that in some cases are interconnected with others by narrow passages, woods represented by the symbols 401, 402 and 405.



 **MAPS**

The maps will be in accordance with ISOM 2017-2, at 1:15.000 and 1:10.000 scales and 5m contour equidistance and ISSprOM, at 1: 4.000 and 2m contour equidistance.

 **SKTECHES AND OLD MAPS**

According to the following annexes (all available at the event website <https://www.cbo.org.br/evento/755>) :

- **Annex “B”** – General sketch SAOC/22;
- **Annex “C”** – Sketch of Medianeira;
- **Annex “D”** – Old map of Reserva Ambiental da Vila A – Middle course;
- **Annex “E”** – Old map of Vila A - Foz do Iguaçu - Brazil –Sprint course.





PUNCHING AND TIMING

Timing and punching using the SPORTident electronic control system. Only the traditional SI Cards in all control stations. Preliminary results will be available in TV screens at the arena.

The organization will make available for rental only the SI-Card8.

For the competition on October 16th (Sprint courses) the SI stations will be prepared for the use of SIAC (contactless).



RULES

The competition will follow the Orienteering Rules of the International Orienteering Federation (IOF) and the Latin Countries Cup Regulations (CPL).

Rule 21.4 – WRE

Competitors must not use or carry communication devices that can transmit or receive information, to or from a remote source, between entering the quarantine zone (or the start area if there is no quarantine zone) and reaching the finish in a race, unless the equipment is approved by the organiser. GPS-enabled devices (watches etc.) can be carried provided that:

- they have no map display
- they have no communication capability other than receiving GPS data
- they are not used for navigation purposes.

However, the organiser has the right to specifically forbid the use of such equipment. The organiser may require competitors to carry a tracking device and/or a GPS data logger.





AWARDS

SAJOC and SAYOC

- Top 3 in each class will be awarded medals offered by the IOF.
- Top 6 in each class will receive participation certificates from the IOF.
- Participation medals from the host countries to all participants.



ANTIDOPING

Latin Cup only - See IOF antidoping rules <http://orienteering.org/anti-doping/>



COURSES DATA & OTHER INFORMATION

According to the following annex:

Annex "A" - Statistical Data of the Courses

Starting time of the Relay for the Elite classes will be 03:00PM

All other classes start 03:10PM.

1. Opening hours of the SECRETARIAT in the different competition places:

DATE	TIME	VENUE	NOTE
Oct 12 th	08:00AM – 08:00PM	Event Centre	Event Centre
Oct 13 th	08:00AM – Noon	Event Centre	Event Centre
	01:00PM – 05:00PM	Parque Lineal	Paraguay
Oct 14 th	08:00AM – 03:00PM	Linha Sol e Ouro	Medianeira
	04:00PM – 06:00PM	Hotel D. Pedro	Event Centre
Oct 15 th	08:00AM – 05:00PM	CTG Charrua	Foz do Iguaçu
Oct 16 th	07:00AM – 01:00PM	Vila A	Foz do Iguaçu



Notes:

- The delivery of the ATHLETE KIT will only be carried out at the Hotel D. Pedro – Event Centre;
- Distribution of BIB numbers and SICards will be available at the Hotel D. Pedro and at the competition venues.



AUTHORIZATIONS AND INSURANCE

Participants are expected to have their own medical insurance.

National rules request that all participants must have their own insurances to protect them in the case of accidents.

All participants under the age of 18 must be allowed by their legal guardian to participate in the competition.



DEADLINES AND COSTS

Entries are closed



QUARANTINE

1- Quarantine closing times for Elites M/W16, 18, 20 and 21 will be as informed below:

DATE	COURSE	TIME	VENUE
Oct 14th	Long	08:30AM	Linha Sol e Ouro – see (1) below
Oct 15th	Middle	08:30AM	CTG Charrua - see (2) below
Oct 16th	Sprint	07:30AM	Vila A - see (3) below

(1) For Oct 14th, there will be 2 School Transport buses from the Municipality of Medianeira. They will departure from the Sol and Gold Line to take the elite athletes at 8:10 AM to the quarantine location, in case there is a delay in the arrival of the bus to the quarantine location all athletes embarked therein will be considered quarantined.

(2) Follow the general sketch to reach the quarantine location – Vietnam Trail

(3) The place of quarantine will be in the 9th Group of Firefighters of Vila A, indicated in the general sketch of the event.





ELITE CLASSES START TIMES

See the following attachments:

- **Annex “G”** – Start times for elite classes Long Course.
- **Annex “H”** – Start times for elite classes Sprint Course.

Important note:

The long course has 31 control points, so the organization will provide, at the quarantine, SI Cards 9 or superior for those runners who have SI Card 8.

START LISTS

For the long course – Oct 14th: The start draw for each (Men and Women) elite courses will be based on the **World Rankings** as on **October 26th, 2022**. The best ranked athletes start at the end of the start field.

For the middle course – Oct 15th: The start order will be based on the long course (Oct 14th) results and they will have the reversed start order from those courses; the first place is the last to start.

For the sprint course – Oct 16th: The start draw for each (Men and Women) elite courses will be based on the **Sprint World Rankings** as on **October 26th, 2022**. The best ranked athletes start at the end of the start field.



CANTONMENT (hard floor)

From 02:00 pm on 12 Oct 22, a cantonment room will be available at CTG CHARRUA. Everyone should carry their sleeping material (Tent, mattress, bed lining and pillow). CTG will charge a fee of BRL 15.00 per day.

Make your reservation through CBO website when doing your entry. In the case you have problems with that, send a message to the organization. WhatsApp +55 45 99628 0249 (Mr. Domingues).

CTG CHARRUA will offer breakfast at the price of R\$ 20.00 (twenty reais), upon reservation and payment, directly at CTG, until 06:00 pm the day before.

Opening hours at CTG Charrua are from 08:00 am on Oct 12th to 10:00 am on Oct 17th, for those who booked until Oct 16.





FOOD AND BANQUET

There will be food available in the following days:

On October 14th, long course, there will be packed food. Look for information or make your reservation at the event secretariat. Cost BRL 25.00 per person.

On October 15th, middle course, hot food will be served at CTG CHARRUA. Look for information or make your reservation at the event secretariat. Cost BRL 35.00 per person.

On the October 15th 22, there will be a **Dance Dinner** (banquet) for the fraternization of the athletes, at the Sports and Social Association of Foz do Iguaçu – GRESFI, at 1872, Avenida Juscelino Kubitscheck, Foz do Iguaçu.

For foreigners reservations will be available at the event secretariat until October 13th, 22. Cost BRL 80.00 per person.

Note:

Athletes who failed to book lunch for October 14th and 15th, can do so at the event's Secretariat or until October 3rd. If someone does not book on the scheduled date, they should try to make reservations until 9:00 am on the day of the event, directly with the people who are selling the lunch.

There are still places for dinner/prom, interested parties should contact Mr. Domingues - Financial Director via WhatsApp +55 55 99628-0249 until Oct 3rd. Those who have not booked until the scheduled date should contact Mr. Domingues, to check the availability of places.



EVENT CENTRE

In Foz do Iguaçu, Dom Pedro I Palace Hotel will be the Event Centre. Its address: Avenida das Cataratas, Km 3 - Phone / Fax (+55 45) 3521 6628/3521 6600 - ZIP Code 85853-000 - Foz do Iguaçu - Paraná - Brazil.

The hotel offers a large leisure area with outdoor swimming pools (adult and children), heated pool, gym, sauna, tennis court, soccer field, shops, internet cafe, bar and room service.

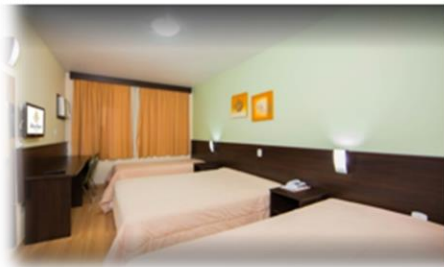
It offers 450 beds, distributed in 187 rooms divided into 2 categories, Standard and Supreme and 2 suites, all equipped with TV, minibar, air conditioning and telephone.

Reservations will be accepted from June 1, 2022, but contacts may already be established with Valdecir Provin - dompedro@hoteldompedro.com.br





Dom Pedro I Palace Hotel



About 800m from the Event Centre you may find Hotel Monalisa, belonging to the same network, also offers great availability of beds.

250m away is a 5-star hotel: Bourbon.

ACCOMMODATION AND TRANSPORT

Competitors traveling by car may reach Foz do Iguacu via BR 277 highway. Those who choose to travel by air can arrive at Foz do Iguacu / Cataratas International Airport. The airport is 10 km away from the event centre. From the airport to the event centre, you may use taxis, Uber and buses.

Coming via Argentina your option is Cataratas del Iguazú International Airport. It is 26km far from the event centre. From the airport to the event centre, taxi and bus services are available.

Coming via Paraguay use Guaraní International Airport, the second most important airport in that country. It is in the city of Minga Guazú, 36km from the event centre. From the airport to the event centre, you can choose between taxis or buses.

For the long courses in *Linha Sol e Ouro* - Medianeira, Brazil, there will be paid transport, coordinated by the Organization. It is highly recommended that the participant chooses this option.

For the course in Paraguay, transportation will be up to the athletes. Bus or taxi can be used (we do not recommend using nonofficial transport). For those who initially choose to go to the centre of Ciudad del Este for shopping: sprint course venue will be approximately 2km away.

Sol e Ouro Line (Long course) in Medianeira is 70 km away.





EVENT T-SHIRT

The SAOC/2022 Organizing Committee will make offer to all athletes, registered until September 5th (end date of the 3rd registration deadline), a CUSTOM T-SHIRT OF THE EVENT, as a gift, which will be part of the Athlete´s Kit. All athletes must access the link on the registration website and correctly fill in the requested information, special attention must be given when selecting the size of the shirt, using the MODEL TABLE BELOW, as a different size than the one requested will not be delivered. THIS TABLE MEETS THE 3 LANGUAGES

T-shirts – Adult and children’s models

ADULTO / ADULT

TAMANHO TALLA SIZE	ALTURA HEIGHT	LARGURA ANCHO WIDTH
PP	67	47
P	70	50
M	72	52
G	75	55
GG	76	59
XG	78	62
XGG	81	64

INFANTIL / CHILD

TAMANHO TALLA SIZE	ALTURA HEIGHT	LARGURA ANCHO WIDTH
2	49	29
4	52	31
6	54	34
8	56	37
10	58	40
12	60	43
14	62	44

No Baby Look available



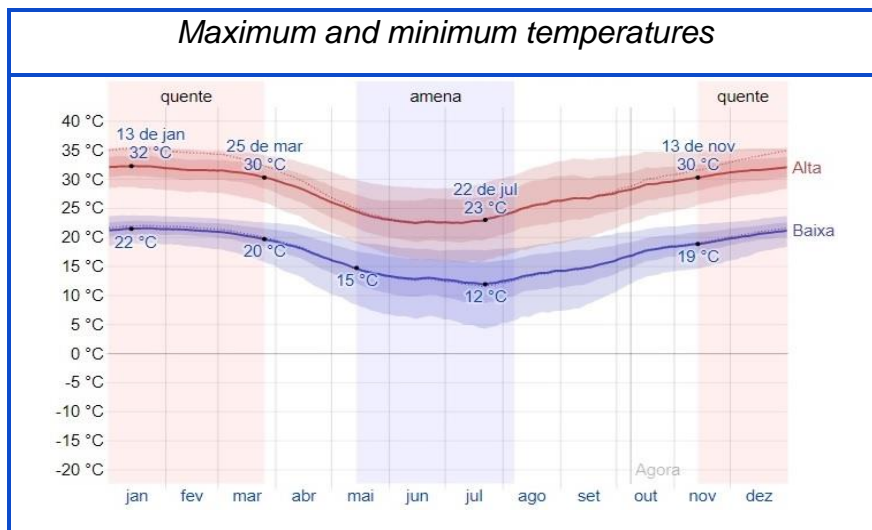
WEATHER

TEMPERATURE

The warm season remains for 4.4 months, from November 13 to March 25, with daily average maximum temperatures above 30 ° C. The warmest day of the year is January 13, with an average maximum temperature of 32 ° C and an average minimum of 22 ° C.

The climate is subtropical humid. At the triple frontier, competition area, summer is long, hot and muggy; winter is short and mild.





Average maximum (red line) and minimum (blue line) temperature.

(Source: [Weather Spark](#) 2019)



Covid-19 – RULES TO ENTER BRAZIL

Covid-19

Brazilians and foreigners can now choose to present proof of vaccination against Covid-19 or negative test for entry into Brazil up to one day before departure to the country. The authorization was validated in an interministerial ordinance published on Sep 12th, 22.

Before, it was the obligation of every traveller to present proof of vaccination before boarding to Brazil - except passengers who had medical contraindications. This change allows any traveller to fulfil any of the necessary requirements.



ACCESS TO HOST COUNTRIES

We recommend to athletes that:

- Check in his/her country of origin the requirements, mainly documents, for entry into the host countries, and;
- You should also seek updated information regarding the requirements for an International Certificate of Vaccination.



We recommend that the competitor seeks in his / her country of origin the requirements, mainly documentary, for admission to the host countries of the event:



- Passport or;

- Identity Card or Business Travel Document from your home country, for the following countries: Argentina, Bolivia, Uruguay, Chile, Paraguay, Peru, Venezuela, Ecuador and Colombia;

- For children under 18 years of age; written travel authorization is required from both parents, legal guardians or competent judicial authority;

- Consular visa according to the purpose of the trip when required.

List of Countries **REQUIRING** Visa for Entry into Brazil. (updated on 9/25/2021).

The complete visa requirement table is available at www.portalconsular.mre.gov.br

Afghanistan, Angola, Saudi Arabia, Algeria, Azerbaijan, Bahrain, Bangladesh, Benin, Botswana, Brunei, Burkina Faso, Burundi, Bhutan, Cape Verde, Cambodia, Cameroun, Qatar, Chad, China, Comoros, North Korea, Ivory Coast, Cuba, Djibouti, Egypt, Eritrea, Ethiopia, Gabon, Gambia, Ghana, Guinea, Guinea-Bissau, Equatorial Guinea, Haiti, Yemen, Cook Islands, Mariana Islands, Marshall Islands, Solomon Islands, India, Iran, Myanmar, Iraq, Jordan, Kiribati, Kuwait, Laos, Lesotho, Lebanon, Liberia, Libya, Madagascar, Malawi, Maldives, Mali, Mauritius, Mauritania, Micronesia, Mozambique, Moldova, Nauru, Nepal, Niger, Nigeria, Oman, Palau, Palestine, Papua New Guinea, Pakistan, Kenya, Kyrgyzstan, Central African Republic, Dominican Republic, Republic of Congo, Democratic Republic of the Congo, Rwanda, Western Samoa, Saint Lucia, Sao Tome and Principe, Senegal, Sierra Leone, Syria, Somalia, Sri Lanka, Swaziland, Sudan, South Sudan, Tajikistan, Ta Tanzania, East Timor, Togo, Tonga, Turkmenistan, Tuvalu, Uganda, Uzbekistan, Vanuatu, Vietnam, Zambia, Zimbabwe.

- Vaccines: There is no requirement for vaccination proof or prophylaxis for entry into Brazil, however, the Ministry of Health recommends that international tourists update their vaccination status prior to arrival, according to the guidelines of the vaccination schedule of the country of origin or residence.



Valid documents for admission:

- Passport or;

- Identity Card or Business Travel Document from your home country, for the following countries: Argentina, Brazil, Bolivia, Uruguay, Chile, Peru, Venezuela, Ecuador and Colombia;

Children must carry an identification card or some official identification document. Another important point is that, if he/she is accompanied by only one of the parents, it is necessary to have an authorization from the other spouse, signed at the notary's office. In the case of responsible people, such as grandparents and uncles, it is necessary to have the signature of both parents.

For those who intend to go by car, it is necessary to hire a mandatory insurance called Green Card. It guarantees the security of Paraguayan citizens in case of possible car accidents.



You should hire the service from a broker for your private car or check with the rental company, if the idea is to rent one. The relatively low amounts are paid according to the number of days you will be staying in the country.

List of countries that **DO NOT** need a visa to enter Paraguay:

South Africa, Germany, Argentina, Austria, Belgium, Bolivia, Brazil, Bulgaria, Chile, China (Taiwan), Cyprus, Colombia, Korea, Costa Rica, Croatia, Cuba, Denmark, Egypt, El Salvador, Ecuador, Slovenia, Spain, Estonia, Philippines, Finland, France, Greece, Guatemala, Honduras, Hungary, India, Indonesia, Ireland, Iceland, Israel, Italy, Japan, Jordan, Latvia, Lebanon, Liechtenstein, Lithuania, Luxembourg, Malta, Morocco, Mexico, Nicaragua, Norway, Netherlands, Panama, Peru, Poland, Portugal, Prince of Andorra, Dominican Republic, United Kingdom, Slovak Republic, Czech Republic, Romania, Russia, Switzerland, Sweden, Turkey, Ukraine, Uruguay, Venezuela and Vietnam.

- Vaccines: Paraguay started to require the International Certificate of Vaccination against yellow fever for Brazilian travelers. It may also be necessary for citizens of other countries who have lived in Brazil for more than 6 months.

To obtain the International Certificate of Vaccination and Prophylaxis (CIVP) it is necessary to take the full dose of the vaccine. Anyone who has had the vaccine at least once in their life and has a proof (vaccination card) does not need a new dose, and can use this proof to obtain the CIVP.



No competition in Argentina. Information for tourism purposes only!

Valid documents for admission:

- Passport or;

- Identity Card or Business Travel Document from your home country, for the following countries: Brazil, Bolivia, Uruguay, Paraguay, Chile, Peru, Venezuela, Ecuador and Colombia;

- If you have a child under the age of 18 he/she must be accompanied by both parents or have a notarized authorization for international travel. Otherwise you will not be able to cross the border;

For those who want to drive through the streets of Mercosur (Argentina), it is necessary to hire a compulsory insurance called Green Card.

You should hire a brokerage service for your private car or ask the rental company if the idea is to rent one. Relatively low amounts are paid according to the number of days you will stay in the country.

List of countries **REQUIRING** visa for entry into Argentina. (updated on 9/25/2021). The complete visa requirement table is available at <http://www.migraciones.gov.ar> (Visas Board):



Afghanistan, Albania, Angola, Antigua & Barbuda, Saudi Arabia, Algeria, Azerbaijan, Bahamas, Bahrain, Bangladesh, Belize, Benin, Bosnia and Herzegovina, Botswana, Brunei, Burkina Faso, Burundi, Bhutan, Cape Verde, Cambodia, Cameroun, Chad , Camores, North Korea, Ivory Coast, Cuba, Egypt, Eritrea, Eswatini, Ethiopia, Philippines, Gabon, Gambia, Ghana, Guinea, Guinea-Bissau, Equatorial Guinea, Haiti, Mariana Islands, Marshall Islands, Solomon Islands, India , Indonesia, Iran, Iraq, Jordan, Kenya, Kiribati, Kuwait, Laos, Yemen, Lesotho, Lebanon, Liberia, Libya, Macau, Madagascar, Malawi, Maldives, Mali, Morocco, Mauritius, Mauritania, Micronesia, Mozambique, Moldova, Myanmar , Nabibia, Nauru, Nepal, Niger, Nigeria, Oman, Palau, Palestine, Papua New Guinea, Pakistan, Kyrgyzstan, Central African Republic, Republic of Congo, Democratic Republic of the Congo, Dominican Republic, People's Republic of China, Rwanda, Samoa , Sao Tome and Principe, Senegal , Seychelles, Sierra Leone, Syria, Somalia, Sri Lanka, Sudan, South Sudan, Taiwan (Republic of China), Tajikistan, Tanzania, East Timor, Togo, Tonga, Tunez, Turkmenistan, Tuvalu, Uganda, Uzbekistan, Vanuatu, Vietnam , Zambia, Zimbabwe, Ybuti.



EVENT SUPPORTERS

- Foz do Iguacu Department of Sport and Leisure
- City Hall of Ciudad del Este
- Medianeira City Hall
- Itaipu Binational
- Sports and Social Association of Foz do Iguacu (GRESFI)
- *Linha Sol e Ouro* community.

SIGNED IN THE ORIGINAL

VALDIR TASCA
Event Director

SIGNED IN THE ORIGINAL

PLINIO COSTA NASCIMENTO
IOF Event Adviser

